



MONTHLY MEMBERSHIP PROGRESS REPORT

Results as of: 2/29/2016

Multiple District 4

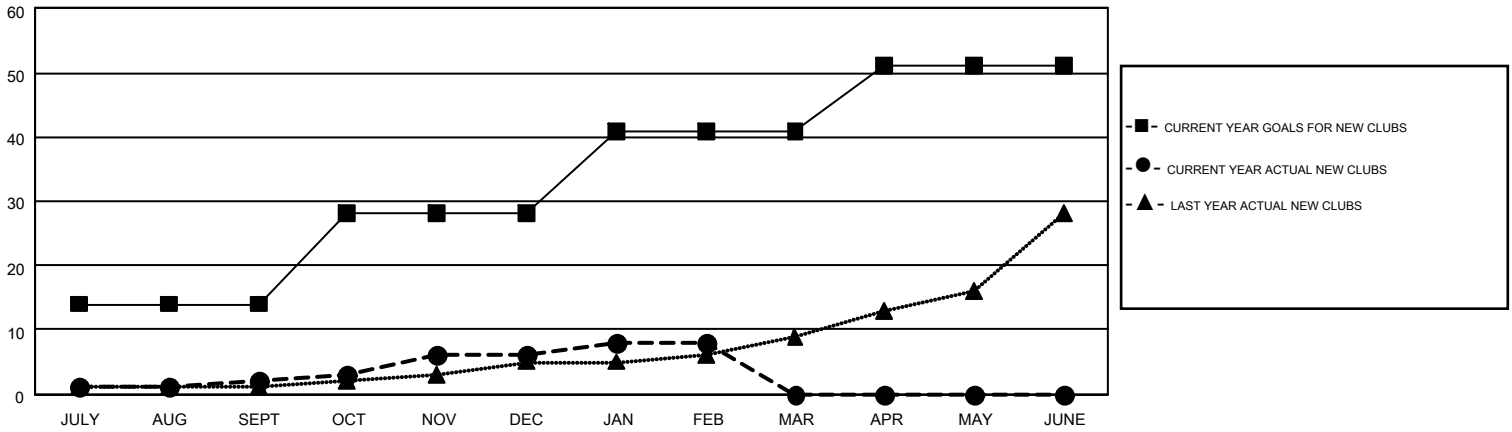
LOCATION: CALIFORNIA

GMT: GARY WONG

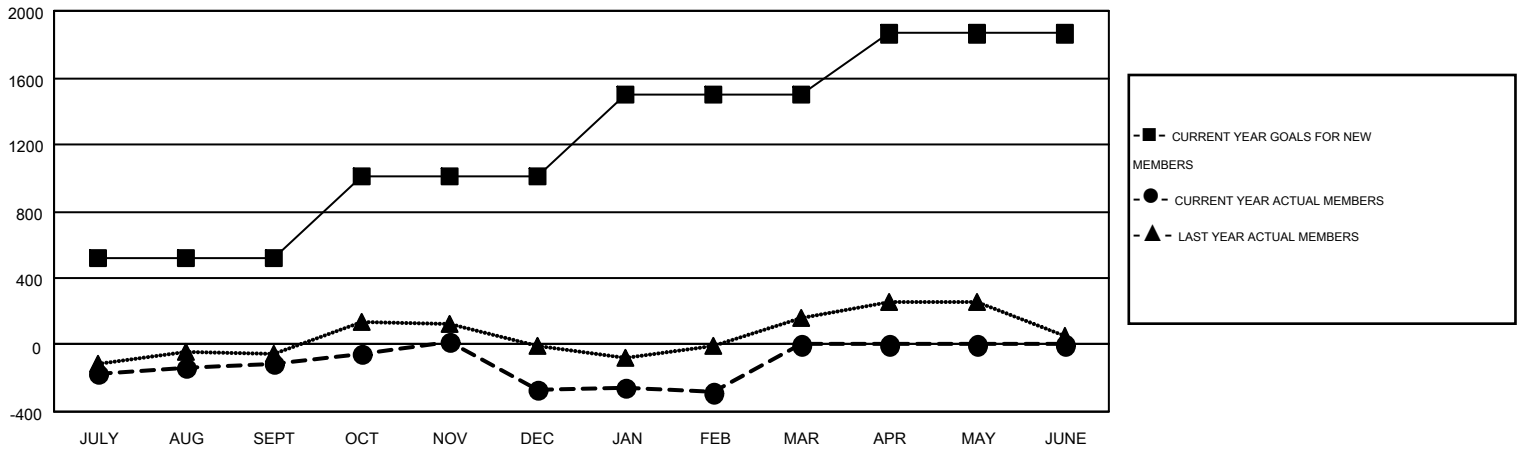
GMT CA 1

| Clubs | | | | | Members | | | | |
|-----------------------|---------------|-----------|---------------|---------------|-----------------------|-----------------|-------------------------------|-----------------|---------------|
| RESULTS FOR 2015-2016 | | | | | RESULTS FOR 2015-2016 | | | | |
| QUARTER | NEW CLUB GOAL | NEW CLUBS | DROPPED CLUBS | NET GAIN/LOSS | QUARTER | NEW MEMBER GOAL | CHARTER AND NEW MEMBERS ADDED | DROPPED MEMBERS | NET GAIN/LOSS |
| JULY/AUG/SEPT | 14 | 2 | 5 | -3 | JULY/AUG/SEPT | 515 | 843 | 958 | -115 |
| OCT/NOV/DEC | 14 | 4 | 5 | -1 | OCT/NOV/DEC | 497 | 623 | 781 | -158 |
| JAN/FEB/MAR | 13 | 2 | 1 | 1 | JAN/FEB/MAR | 482 | 480 | 493 | -13 |
| APR/MAY/JUNE | 10 | 0 | 0 | 0 | APR/MAY/JUNE | 369 | 0 | 0 | 0 |

GOALS AND ACTUAL NEW CLUBS CUMULATIVE



GOALS AND ACTUAL MEMBERS CUMULATIVE



| | | | |
|------------------------|--|------------------------------------|-----------------|
| DROPPED CLUBS: 11 | 454 CLUBS OF 744 ADDED 1 OR MORE NEW MEMBERS | <u>GENDER DISTRIBUTION</u> | |
| <u>DROPPED MEMBERS</u> | | MALE | 13,266 (64.94%) |
| DECEASED | 192 | FEMALE | 7,163 (35.06%) |
| CLUB CANCELLED | 134 | <u>FAMILY UNIT MEMBERS</u> 3,622 | |
| OTHER | 1,902 | <u>HEAD OF HOUSEHOLD</u> 1,733 | |
| TOTAL | 2,228 | <u>NON-HEAD OF HOUSEHOLD</u> 1,889 | |

[CLICK HERE FOR HEALTH ASSESSMENT DATA](#)